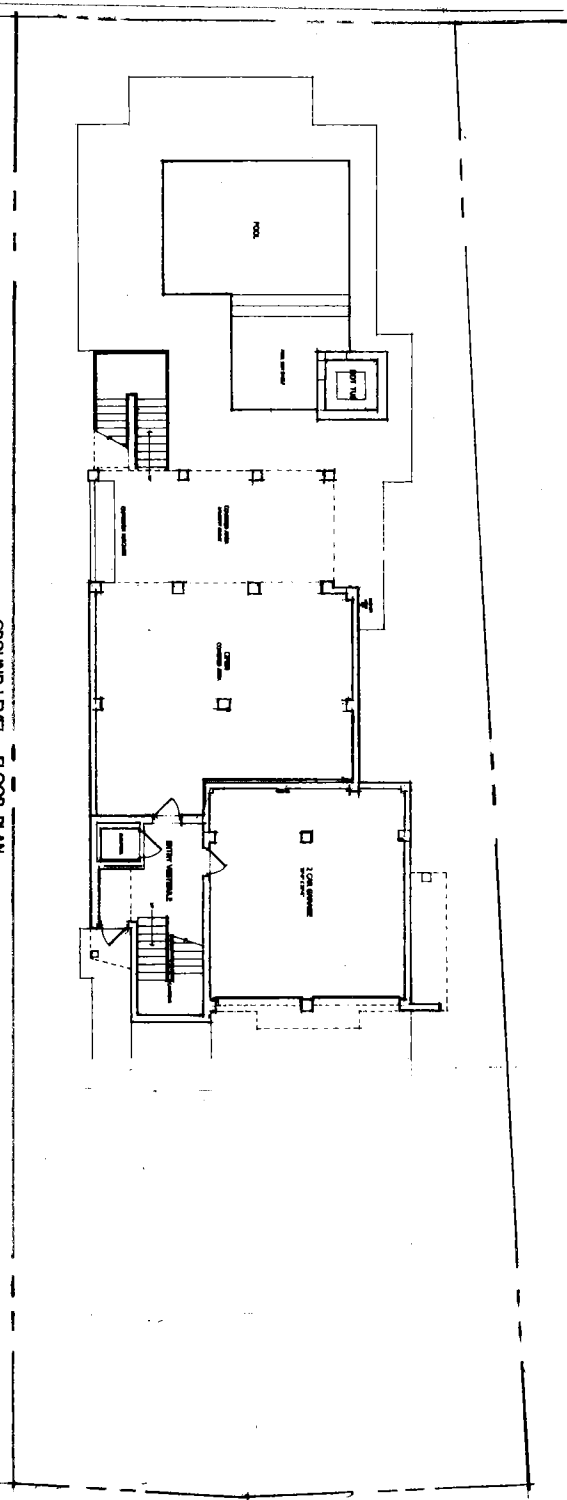


San Carlos Bay



GROUND LEVEL - FLOOR PLAN  
825 San Carlos Dr - Fort Myers Beach, FL

# SITE PLAN - 825 SAN CARLOS DR Fort Myers Beach, FL

TOTAL HOUSE AREAS: (Gross Areas)

3,637 SQ.FT. - AIR CONDITION

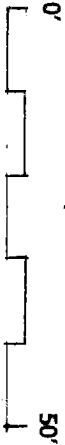
656 SQ.FT. - GARAGE UNCONDITIONED

779 SQ.FT. - UNCONDITIONED/COVERED GROUND LEVEL AREA

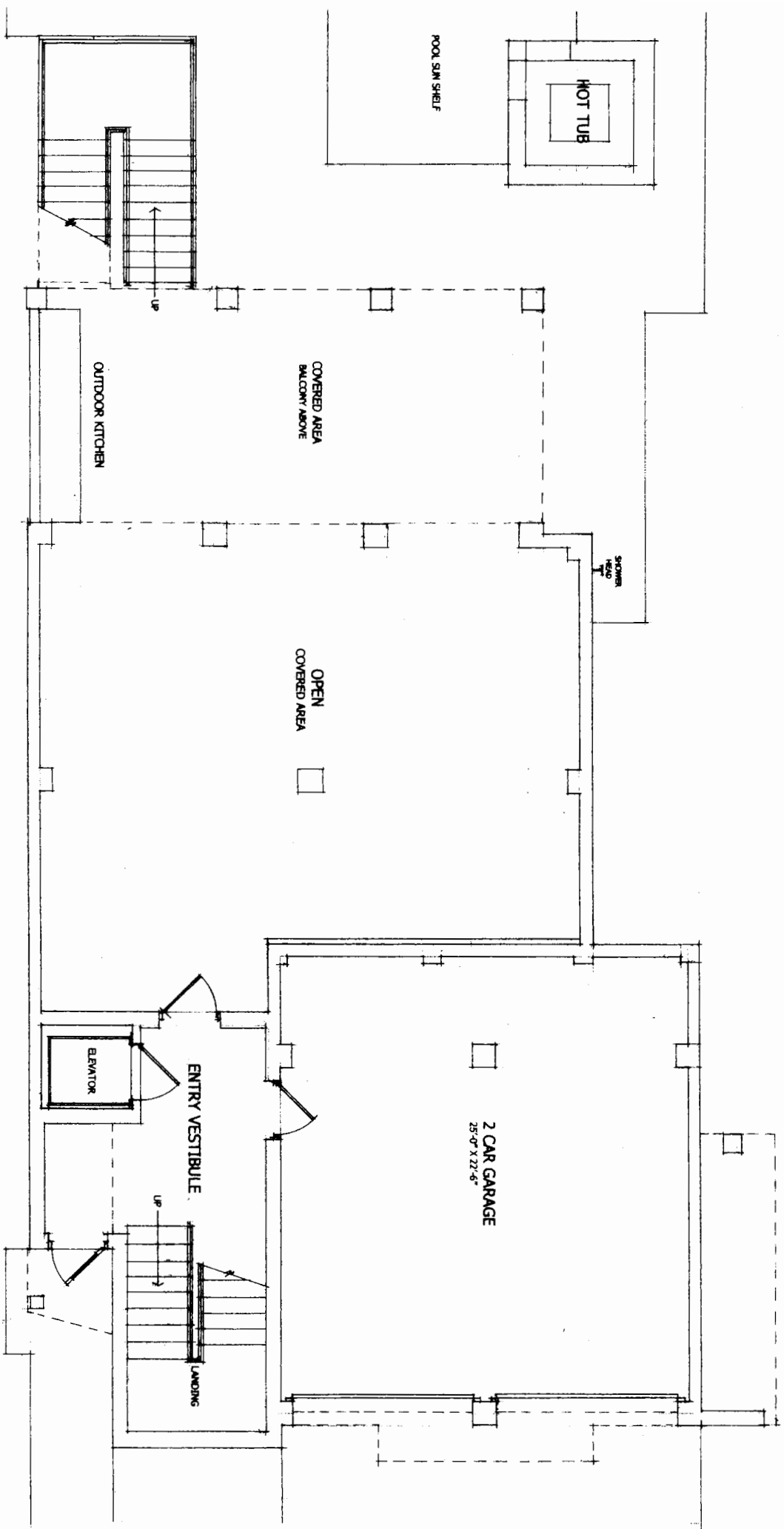
400 SQ.FT. - UNCONDITIONED GROUND LEVEL/COVERED BY BALCONY

653 SQ.FT. - BALCONIES

6,125 SQ.FT. - TOTAL AREAS



San Carlos Dr



**GROUND FLOOR LEVEL AREAS:**

276 SQ.FT. - AIR CONDITIONED

656 SQ.FT. - GARAGE

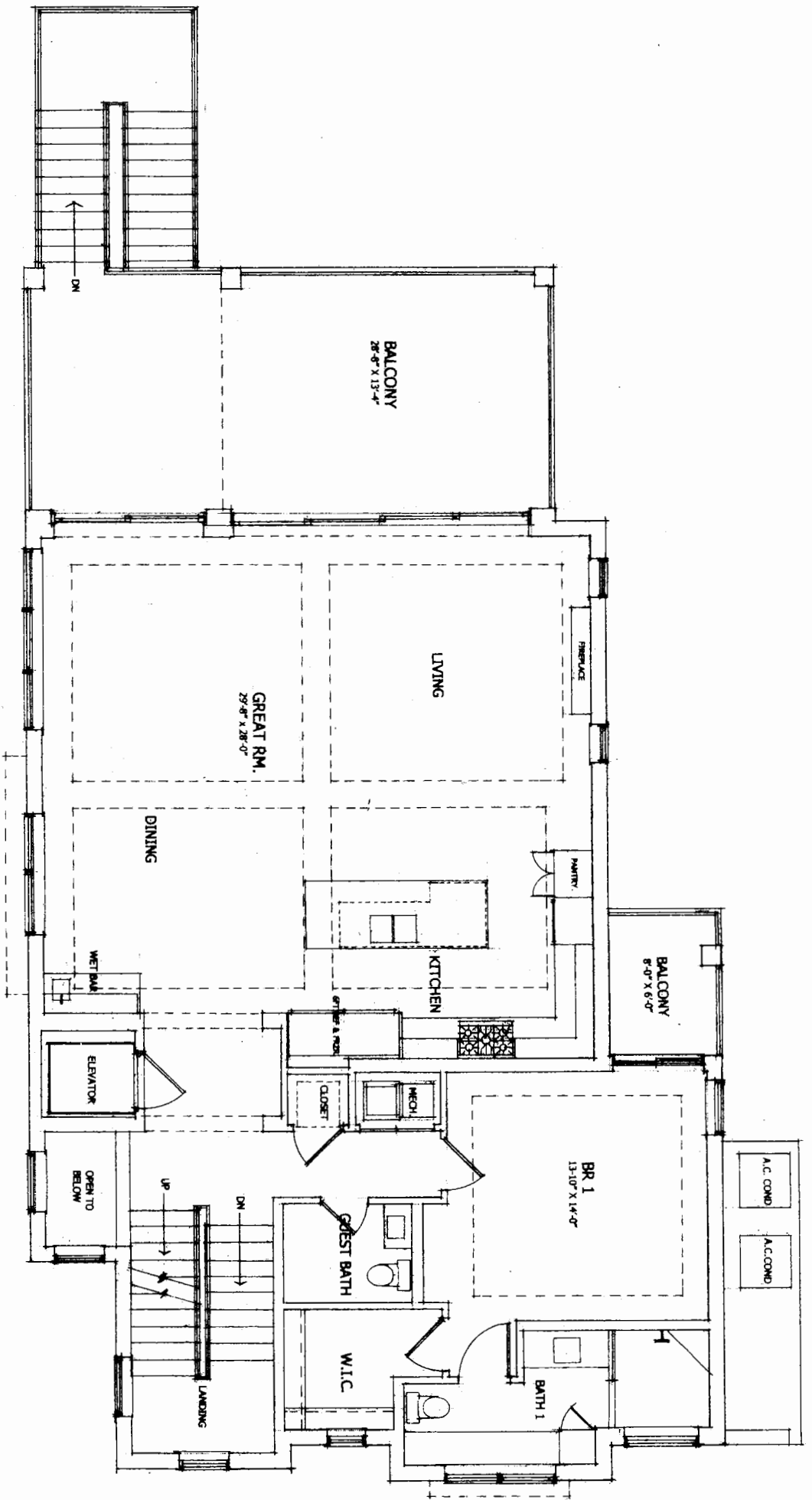
779 SQ.FT. - UNCONDITIONED/COVERED GREAT RM ABOVE

400 SQ.FT. - COVERED/BALCONY ABOVE

2,111 SQ.FT. - TOTAL GROUND FLOOR LEVEL - COVERED

**GROUND LEVEL - FLOOR PLAN**

825 San Carlos Dr - Fort Myers Beach, FL



**FIRST FLOOR LIVING LEVEL AREAS:**

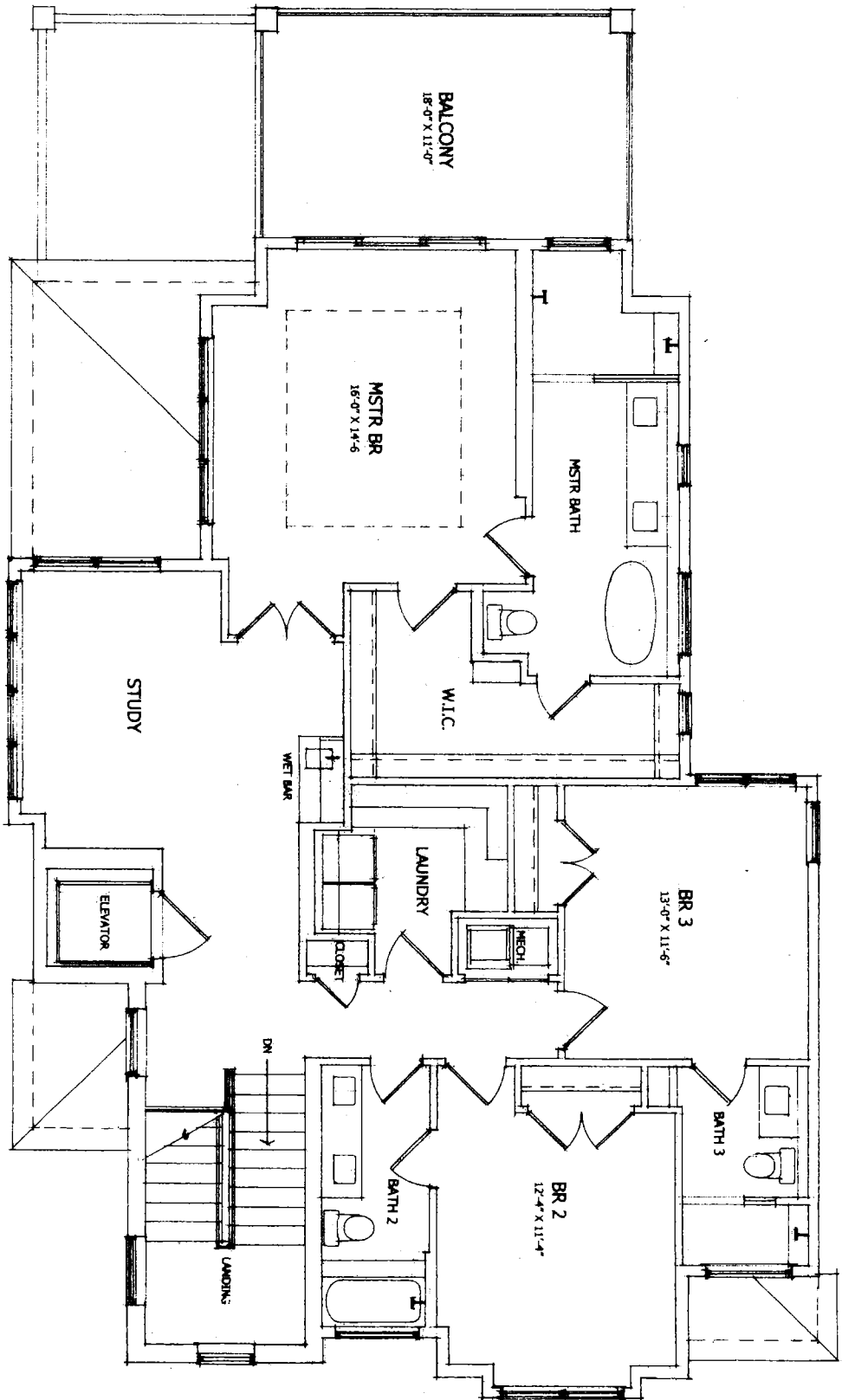
1,705 SQ.FT. - AIR CONDITIONED

449 SQ.FT. - BALCONIES

1,860 SQ.FT. - TOTAL FIRST FLOOR LIVING LEVEL AREAS

**FIRST LIVING LEVEL - FLOOR PLAN**

825 San Carlos Dr - Fort Myers Beach, FL



**SECOND FLOOR LIVING LEVEL AREAS:**

1,656 SQ.FT. - AIR CONDITIONED

204 SQ.FT. - BALCONY

1,860 SQ.FT. - TOTAL SECOND FLOOR LIVING LEVEL AREAS

**SECOND LIVING LEVEL - FLOOR PLAN**

825 San Carlos Dr - Fort Myers Beach, FL